



## Balun Design

In the design of mixers, push-pull amplifiers, baluns are used to link a symmetrical (balanced) circuit to an asymmetrical (unbalanced) circuit.

Baluns are designed to have a precise 180-degree phase shift, with minimum loss and equal balanced impedances. In power amplifiers loss of symmetry will degrade efficiency and the symmetrical port must be well isolated from ground to eliminate parasitic oscillations.

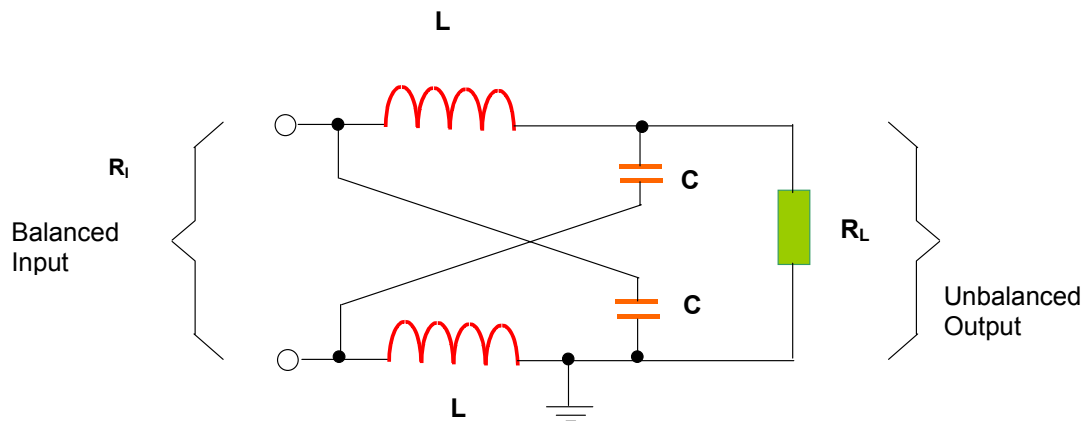
The basic construction/design of a balun consists of two 90-degree phasing lines that provide the required 180-degree split, and this involves the use of  $\lambda/4$  and  $\lambda/2$ .

A wire-wound transformer provides an excellent balun. Miniature wirewound transformers are commercially available covering frequencies from low kHz to beyond 2GHz. They are often realised with a centre-tapped secondary winding, if grounded this provides a short circuit to even-mode (common-mode) signals whilst having no effect on the differential (odd-mode) signal.

Wire-wound transformers are more expensive than the printed or lumped element baluns described below, which find greater adoption in practical mixer designs. It should be noted that most of these lumped element and printed baluns do not provide the centre-tapped ground to even mode signals and this fact must be accounted for in the mixer design.

### (1) L-C Balun

This design is essentially a bridge and is known as a 'lattice-type' balun. It consists of two capacitors and two inductors, which produce the  $\pm 90$  degree phase shifts. The diagram below (Figure 1) shows the circuit diagram of the Balun.



**Figure 1 Schematic diagram of a L-C lumped balun.**

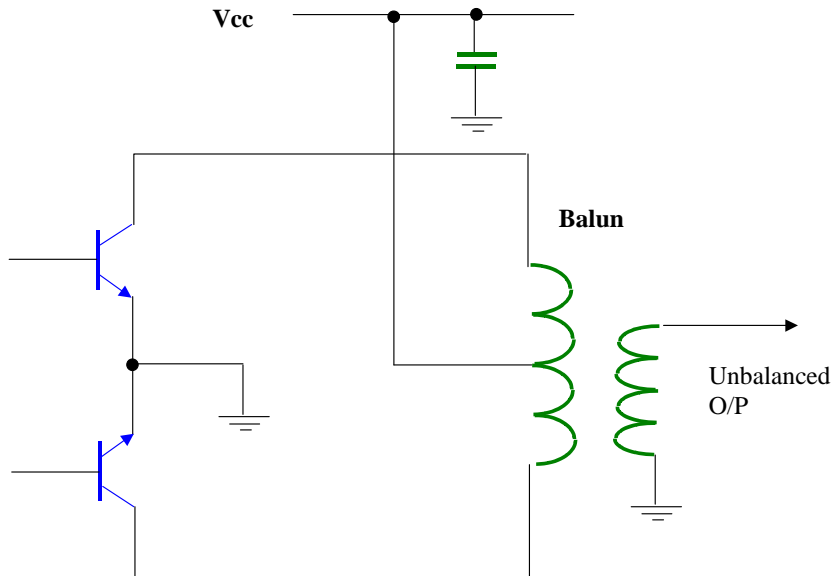
At operating frequency

$$\omega = 2\pi f \quad \text{and} \quad Z_c = \sqrt{R_i \cdot R_L}$$

$$L = \frac{Z_c}{\omega} \quad ; \quad C = \frac{1}{\omega \cdot Z_c}$$

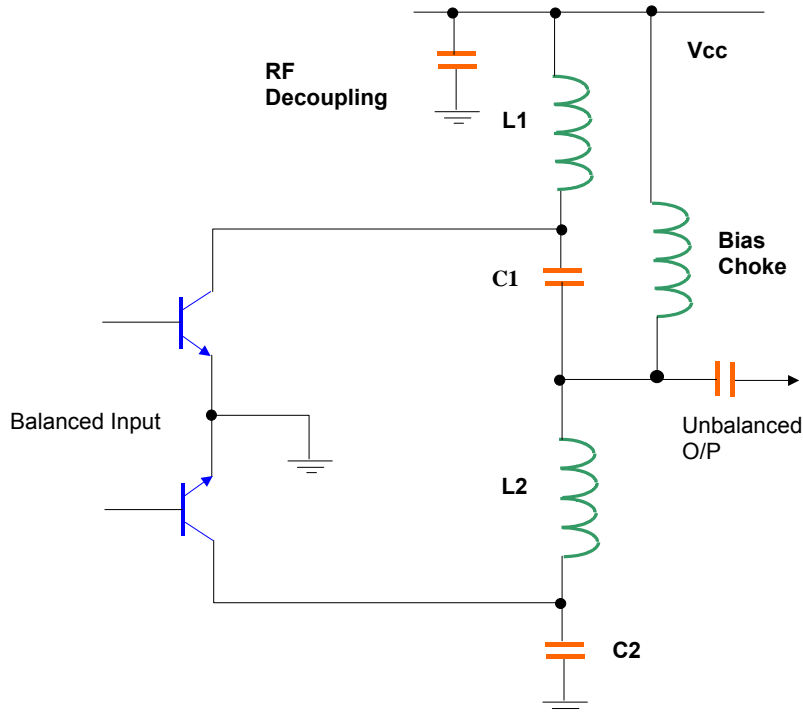
When designing this circuit make sure that the operating frequency is well below the self-resonant frequencies of the components and take account of pad capacitances.

One of the main applications of this circuit is on the output of a push-pull amplifier, which provides a balanced signal and we want to convert to a single un-balanced output. Normally a wound toroid style of balun is used as shown in Figure 2.



**Figure 2 Use of a wire-wound balun on the output of a push-pull amplifier stage to provide a balanced to unbalanced conversion.**

However, it may be convenient especially at chip level to realise the wound transformer type balun, with the previously described lumped balun as shown in Figure 3.

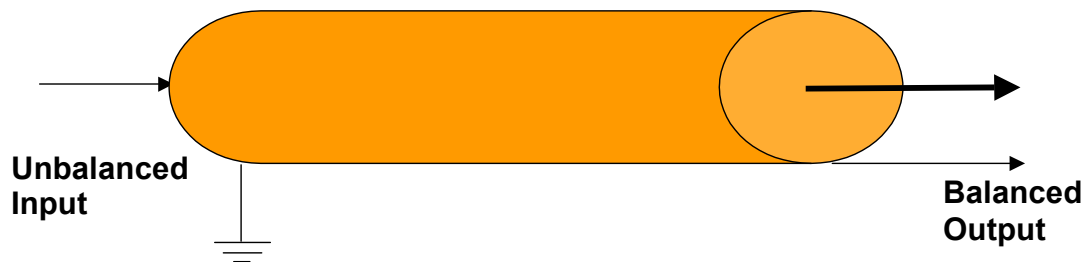


**Figure 3** The balanced to unbalanced transformation can be achieved by using lumped components instead of a wound transformer.

**(2) Transmission Line**

This balun can be realised from a  $\lambda/4$  length of line or coax as shown in Figure 4:

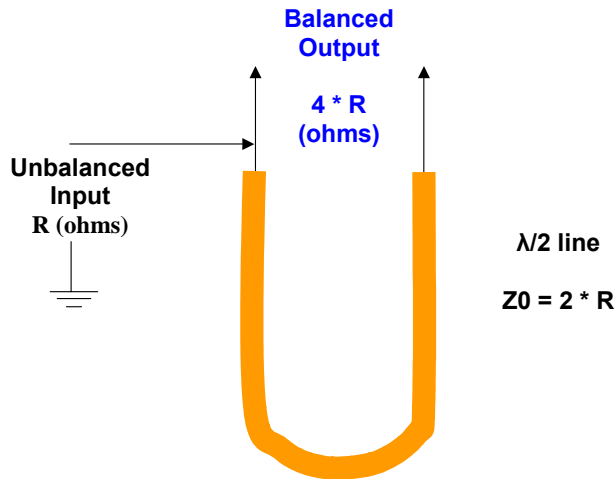
**(a) 1:1 Coaxial Balun**



**Figure 4** Coaxial balun realised from a quarter length of coaxial cable, and gives a 1:1 impedance transformation.

If we require an impedance transformation of 1:4 then we can utilise the coaxial balun as shown in Figure 5.

**(b) 1:4 Coaxial Balun**



**Figure 5 Coaxial balun realised from a quarter length of coaxial cable, and gives a 1:4 impedance transformation**

**(3) Microstrip**

There are a wide-range of printed/micro-strip balun topologies they have the advantage of being inexpensive, realised as they are on the Printed Circuit Board (PCB) or Microwave Integrated Circuit (MIC) substrate. On the downside they can be quite large, particularly at lower RF frequencies. The rat-race coupler is commonly used at microwave frequencies for bandwidths of up to around 10-20%.



**Figure 6 Simple coupled line balun**

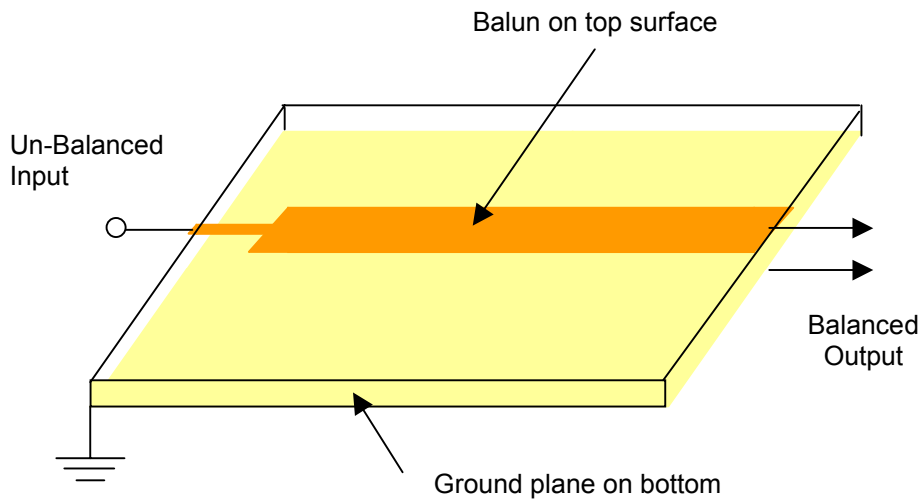
The simplest printed balun is the coupled line balun, also called a parallel-line balun shown in Figure 6. The structure is a quarter of a wavelength long at the centre frequency. It is capable of bandwidths of over an octave, provided the coupling between the lines is high enough. In practice this is not normally the case for the simple edge coupled balun shown in Figure 7.



**Figure 7 Coupled line balun using multiple coupled lines**

A more practical approach is to use multiple coupled lines as shown in Figure 7 or, where multi-layer substrate processing is available, to adopt a broad-side coupler topology as in Figure 8.

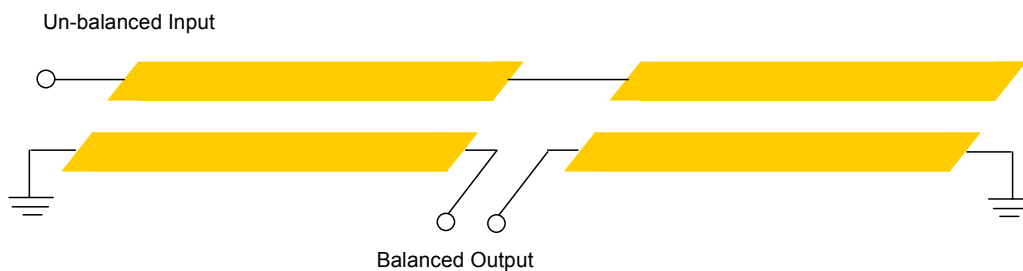
This broadside-coupled implementation is often referred to as a parallel plate balun.



**Figure 8 Coupled line balun, using broadside coupler structure**

An improvement on the parallel-line balun is a printed version of the “Marchand Balun”. This is derived from the co-axial balun, described by Nathan Marchand in 1944 . The printed version of the Marchand balun is shown in its simplest form in Figure 9.

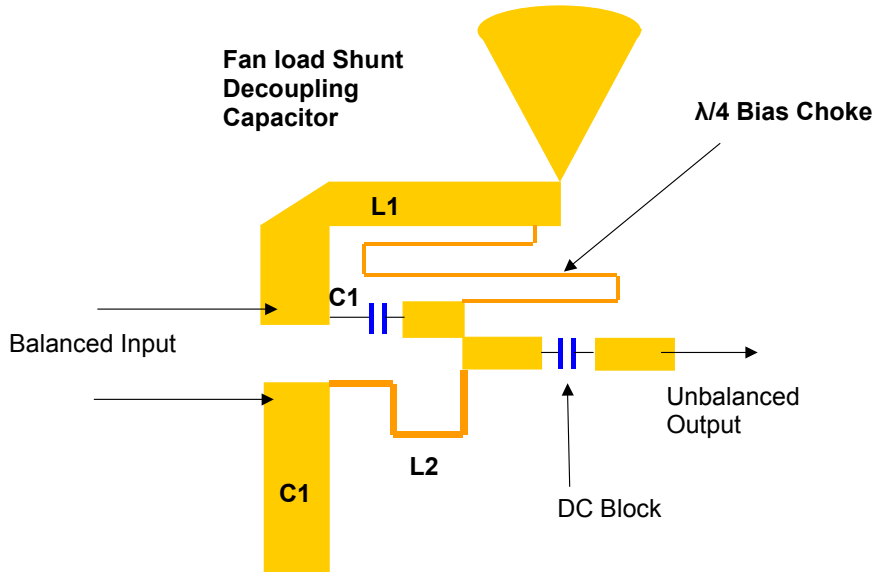
This is more tolerant to low even mode impedance (low coupling ratio) than the parallel line balun and has a wider bandwidth.



**Figure 9 Printed Marchand Balun**

As with the parallel line balun, improved performance is obtained if multiple planar section are used or if a broadside coupling topology is adopted. One draw back to using these printed baluns at lower RF frequencies is their size. As with the parallel line and Marchand baluns, the use of broadside, rather than edge, coupling will yield tighter coupling and improved performance.

Finally we can realise the LC balun type balun using microstrip techniques. Here we are using the microstrip equivalents of capacitors and inductors as shown in Figure 10.



**Figure 10 LC balun type balun using micro-strip techniques to realise capacitors and inductors.**

Shunt Capacitors to ground, are realised a low impedance (ie wide track) open circuit stubs, while inductors are realised as high impedance lines (very narrow tracks). The fan load also acts as a shunt capacitor to ground providing RF de-coupling of the network at RF frequencies.

## 射频和天线设计培训课程推荐

易迪拓培训([www.edatop.com](http://www.edatop.com))由数名来自于研发第一线的资深工程师发起成立,致力并专注于微波、射频、天线设计研发人才的培养;我们于 2006 年整合合并微波 EDA 网([www.mweda.com](http://www.mweda.com)),现已发展成为国内最大的微波射频和天线设计人才培养基地,成功推出多套微波射频以及天线设计经典培训课程和 ADS、HFSS 等专业软件使用培训课程,广受客户好评;并先后与人民邮电出版社、电子工业出版社合作出版了多本专业图书,帮助数万名工程师提升了专业技术能力。客户遍布中兴通讯、研通高频、埃威航电、国人通信等多家国内知名公司,以及台湾工业技术研究院、永业科技、全一电子等多家台湾地区企业。

易迪拓培训课程列表: <http://www.edatop.com/peixun/rfe/129.html>



### 射频工程师养成培训课程套装

该套装精选了射频专业基础培训课程、射频仿真设计培训课程和射频电路测量培训课程三个类别共 30 门视频培训课程和 3 本图书教材;旨在引领学员全面学习一个射频工程师需要熟悉、理解和掌握的专业知识和研发设计能力。通过套装的学习,能够让学员完全达到和胜任一个合格的射频工程师的要求...

课程网址: <http://www.edatop.com/peixun/rfe/110.html>

### ADS 学习培训课程套装

该套装是迄今国内最全面、最权威的 ADS 培训教程,共包含 10 门 ADS 学习培训课程。课程是由具有多年 ADS 使用经验的微波射频与通信系统设计领域资深专家讲解,并多结合设计实例,由浅入深、详细而又全面地讲解了 ADS 在微波射频电路设计、通信系统设计和电磁仿真设计方面的内容。能让您在最短的时间内学会使用 ADS,迅速提升个人技术能力,把 ADS 真正应用到实际研发工作中去,成为 ADS 设计专家...



课程网址: <http://www.edatop.com/peixun/ads/13.html>



### HFSS 学习培训课程套装

该套课程套装包含了本站全部 HFSS 培训课程,是迄今国内最全面、最专业的 HFSS 培训教程套装,可以帮助您从零开始,全面深入学习 HFSS 的各项功能和在多个方面的工程应用。购买套装,更可超值赠送 3 个月免费学习答疑,随时解答您学习过程中遇到的棘手问题,让您的 HFSS 学习更加轻松顺畅...

课程网址: <http://www.edatop.com/peixun/hfss/11.html>

## CST 学习培训课程套装

该培训套装由易迪拓培训联合微波 EDA 网共同推出,是最全面、系统、专业的 CST 微波工作室培训课程套装,所有课程都由经验丰富的专家授课,视频教学,可以帮助您从零开始,全面系统地学习 CST 微波工作的各项功能及其在微波射频、天线设计等领域的设计应用。且购买该套装,还可超值赠送 3 个月免费学习答疑...

课程网址: <http://www.edatop.com/peixun/cst/24.html>



## HFSS 天线设计培训课程套装

套装包含 6 门视频课程和 1 本图书,课程从基础讲起,内容由浅入深,理论介绍和实际操作讲解相结合,全面系统的讲解了 HFSS 天线设计的全过程。是国内最全面、最专业的 HFSS 天线设计课程,可以帮助您快速学习掌握如何使用 HFSS 设计天线,让天线设计不再难...

课程网址: <http://www.edatop.com/peixun/hfss/122.html>

## 13.56MHz NFC/RFID 线圈天线设计培训课程套装

套装包含 4 门视频培训课程,培训将 13.56MHz 线圈天线设计原理和仿真设计实践相结合,全面系统地讲解了 13.56MHz 线圈天线的工作原理、设计方法、设计考量以及使用 HFSS 和 CST 仿真分析线圈天线的具体操作,同时还介绍了 13.56MHz 线圈天线匹配电路的设计和调试。通过该套课程的学习,可以帮助您快速学习掌握 13.56MHz 线圈天线及其匹配电路的原理、设计和调试...

详情浏览: <http://www.edatop.com/peixun/antenna/116.html>



### 我们的课程优势:

- ※ 成立于 2004 年,10 多年丰富的行业经验,
- ※ 一直致力并专注于微波射频和天线设计工程师的培养,更了解该行业对人才的要求
- ※ 经验丰富的一线资深工程师讲授,结合实际工程案例,直观、实用、易学

### 联系我们:

- ※ 易迪拓培训官网: <http://www.edatop.com>
- ※ 微波 EDA 网: <http://www.mweda.com>
- ※ 官方淘宝店: <http://shop36920890.taobao.com>