

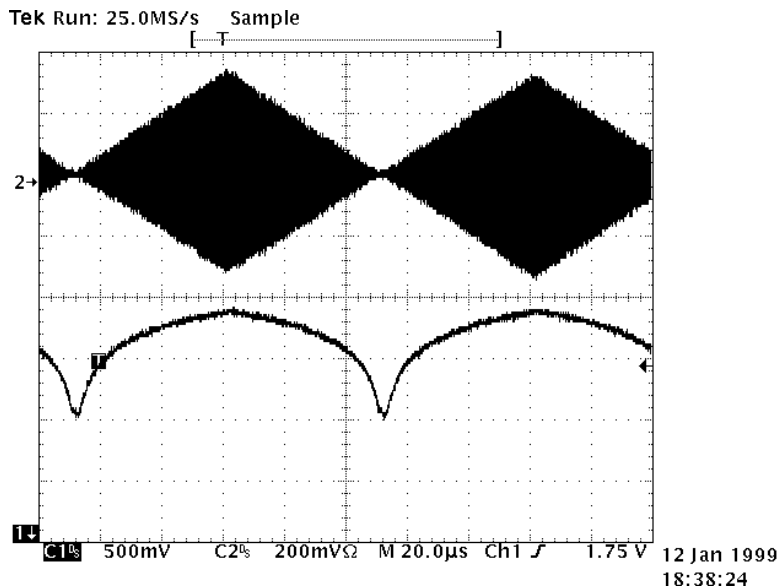
## Measurement and Control of RF Power (Part II)

By Eamon Nash

Applications Engineer, Analog Devices, Inc.

### Log Amps

The term log amp, as it is generally understood, refers to a device which calculates the logarithm of an input signal's *envelope*. In the response of an AD8307, a 500-MHz 90-dB log amp, to a 10-MHz sine wave modulated by a 100-kHz triangular wave (see Fig. 8) note that the input signal on the scope photo consists of many cycles of the 10-MHz signal, compressed together using the time/div knob of the oscilloscope. We do this to show the *envelope* of the signal with the much slower repetition frequency of 100 kHz. As the envelope of the signal increases linearly, we can see the characteristic,  $\log(x)$  form in the output response. In contrast, if our measurement device was a linear envelope detector (e.g. a diode detector) the output would still be a tri-wave.

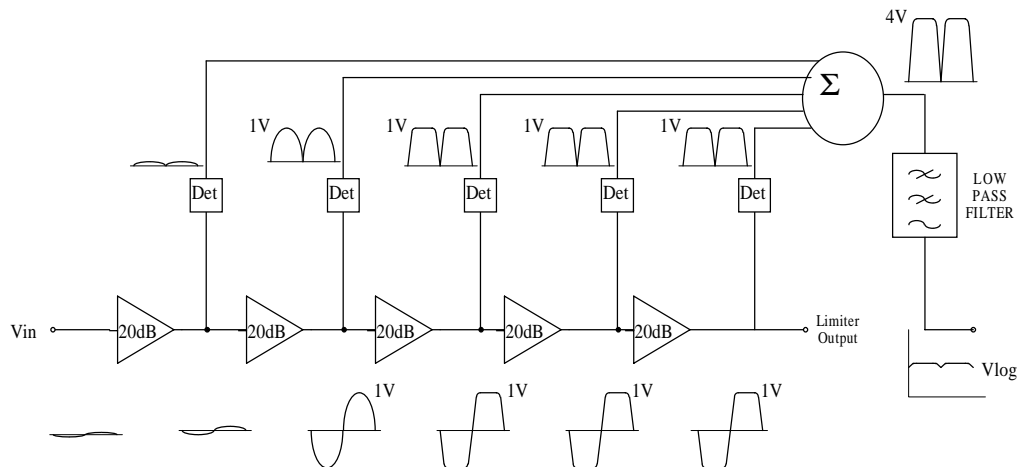


**Fig. 8: Response of a Log Amp to a Linear Envelope Ramp**

So the log amp gives an indication of the ac amplitude of the signal in the logarithmic domain. In general, log amps are used to measure signal strength as opposed to detecting signal content. The term “demodulating”, which is used to describe this type of log amp, is a little misleading, but because a log amp recovers the logarithm of the envelope of a signal (something similar to the process of demodulating AM), the term *demodulating* has been adopted to describe this type of device.

## Operation of a Demodulating Log Amp

The core of the simplified block diagram of a log amp (see Fig. 9) is a cascaded chain of amplifiers. These amplifiers have linear gain, usually somewhere between 10 and 20 dB. For simplicity here we have chosen a chain of 5 amplifiers, each with a gain of 20 dB, or 10X. Now, imagine a small sine wave being fed into the first amplifier in the chain. The first amplifier will gain the signal up by a factor of 10 before it is applied to the second amplifier. So as the signal passes through each subsequent stage, it is amplified by an additional 20 dB.



**Fig. 9: Log Amp Block Diagram**

Now, as the signal progresses down the gain chain, it will at some stage get so big that it will begin to clip or limit at a precise level, and in this example it has been set at 1 Vpk.

After the signal has gone into limiting in one of the stages (this happens at the output of the third stage in Fig. 9), the limited signal continues down the signal chain, maintaining its 1 Vpk amplitude as it goes.

The signal at the output of each amplifier is also fed into a full wave rectifier (marked Det in Fig. 9.) The outputs of these rectifiers are summed together as shown, and the summer's output is applied to a low-pass filter to remove the ripple of the rectified signal. This yields the logarithmic output (often referred to as the "video" output) which will be a steady state dc output for a steady-state ac input signal.

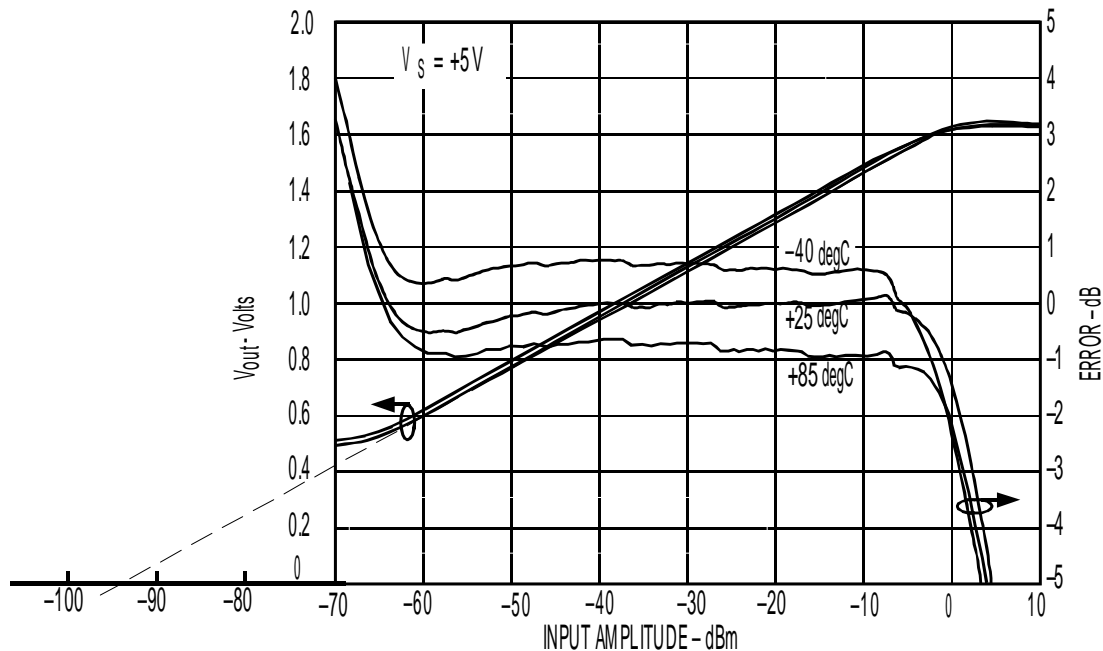
To understand how this signal transformation yields the log of the input signal's envelope, consider what happens if the input signal is reduced by 20 dB. As it stands in the figure, the unfiltered output of the summer is about 4 Vpk (from 3 stages that are limiting and a fourth that is just about to limit.) If we reduce the input signal by a factor of 10, one less stage will be limiting. The voltage from this stage will reduce the output

of the summer to approximately 3 V. If we reduce the input signal by a further 20 dB, the summer's output will drop to about 2 V.

So the output is changing by 1 V for each 20 dB change at the input. We can describe the log amp then as having a *slope* of 50 mV/dB. This a key difference to a diode detector whose slope in mV/dB changes with input level. The obvious advantage of a log amp is that it has higher dynamic range and a constant slope. However, the diode detector transfer function has advantages where precision at high levels is important. Because the diode circuit has very high resolution at high input levels (i.e. more volts per dB), making small adjustments in power will be easier.

### Transfer Function in Terms of Slope and Intercept

As in the case of the diode detector circuit, slope and intercept are the two specifications that define the transfer function of the log amp. The transfer function at 900 MHz of the AD8313, a 100-MHz to 2.5-GHz 65-dB log amp (see Fig. 10) shows that the output voltage changes by about 180 mV for a 10-dB change at the input. From this we can deduce that the slope of the transfer function is 18 mV/dB.



**Fig. 10: Slope and Intercept of a Log Amp**

Now, we can see that as the input signal drops down below about -65 dBm the response begins to flatten out with the device at the bottom of its range. However, if we extrapolate the linear part of the transfer function until it hits the horizontal axis, we hit a point that we call the intercept (at about -93 dBm in this case.) Note that the convention in

specification of log amps is to specify this x-axis intercept, not the y-axis intercept that we use to specify diode detectors.

The slope of a particular device is determined by doing a simple two-point calibration, that is, the output voltage is measured for two known input levels that are within the linear operating range. The slope is simply,

$$\text{Slope} = (V_{O2} - V_{O1}) / (P_{I2} - P_{I1}) \quad [1]$$

The intercept is given by the equation,

$$\text{Intercept} = P_{I1} - V_{O1} / \text{Slope} \quad [2]$$

Once we know the slope and intercept of a particular device we can work out the ideal output voltage of the log amp for any input level within the linear range (about -65 dBm to 0 dBm in this case) using the simple equation,

$$V_{out} = \text{Slope}(\text{Pin} - \text{Intercept}) \quad [3]$$

For example, if the input signal is -40 dBm the output voltage will be equal to,

$$18 \text{ mV/dB} \times (-40 \text{ dBm} - (-93 \text{ dBm})) = 0.95 \text{ V}$$

It is worth noting that an increase in the intercept value *decreases* the output voltage.

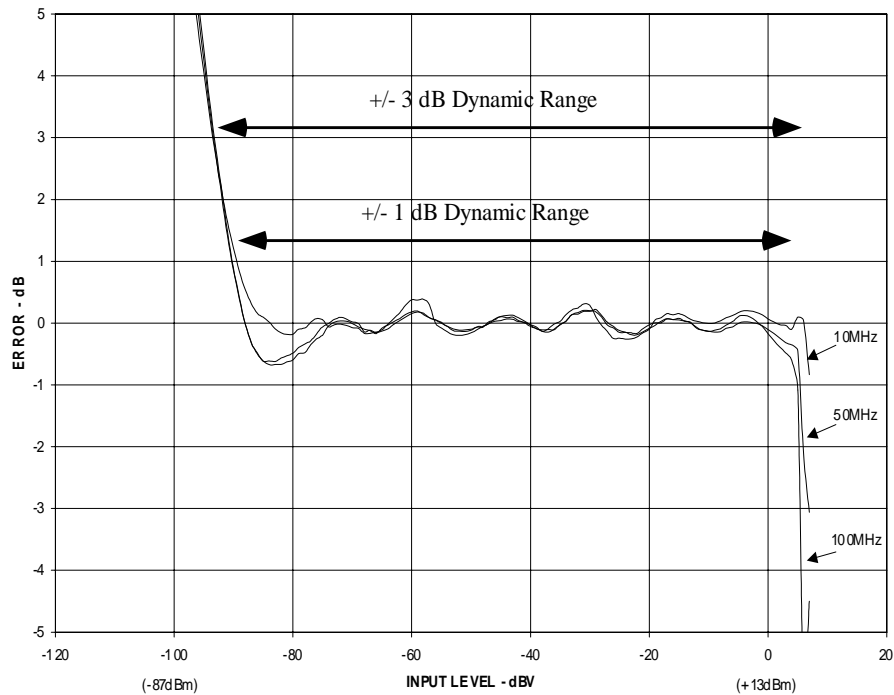
In a practical system we will be using the log amp to estimate the (unknown) input signal based upon the measured output voltage. To do this we rearrange equation [3],

$$\text{Pin} = (V_{out} / \text{Slope}) + \text{Intercept} \quad [4]$$

## Log-Conformance

In the same way that we examined the linearity of a diode detector, we can plot the linearity of a log amp's response. It is somewhat confusing to talk about linearity of a log function but, more specifically, we are interested in the conformance of the device's transfer function to the  $\log(x)$  mathematical function.

Log-Conformance, therefore, shows the range over which the device maintains its constant slope and also shows ripple or any non-linearity over the input range. The dynamic range of the log amp is defined as the range over which the slope remains within a certain error band, usually  $\pm 1$  dB or  $\pm 3$  dB. In Fig. 11, for example, the  $\pm 1$  dB dynamic range is approximately 95 dB (from +5 dBV to -90 dBV.)



**Fig. 11: Log Conformance of a Log Amp**

### Temperature Stability

As in the case of a diode we can also plot the log-conformance of the log amp over temperature with respect to the calculated slope and intercept at room temperature. The transfer function and log conformance of the AD8314, a 45-dB log amp, at 2.5 GHz (Fig. 12) shows that the temperature drift and log-conformance are well inside the  $\pm 1$  dB error bands over a range of approximately 40 dB (-17 dBV to -57 dBV.) In precision applications the device should not be operated outside this range. Notice that for an input level of 0 dBm (-13 dBV) the log-conformance error at 25 °C is still quite good, at about +0.7 dB. However, over temperature, especially at cold, there is a steep increase in the error to approximately -2 dB. This need to "back off" on the maximum input level to the log amp is reinforced by the fact that most wireless communications systems have their strictest emissions specifications at maximum power.

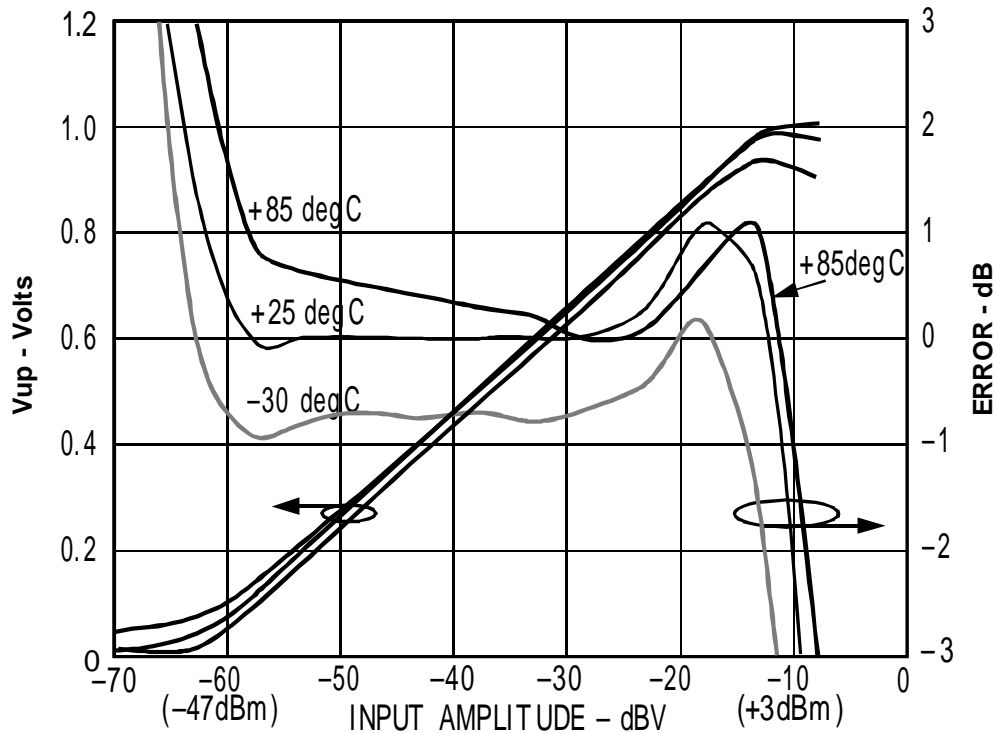


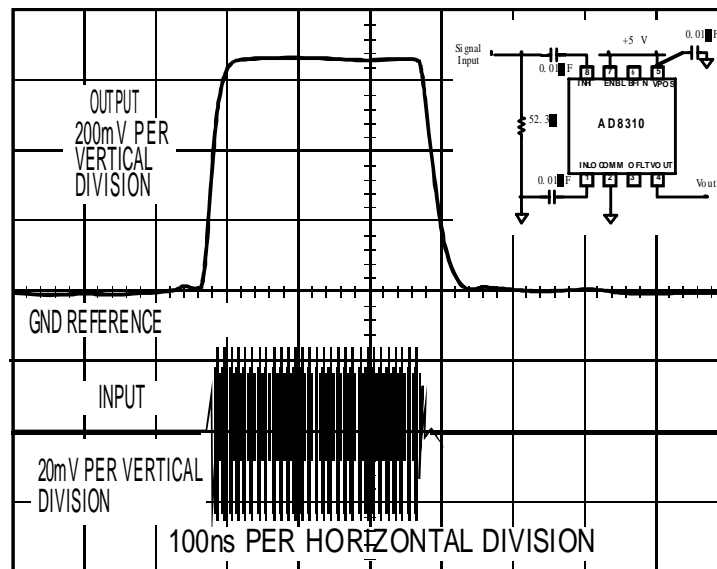
Fig. 12: Temperature Stability of a Log Amp

### dBV Vs. dBm

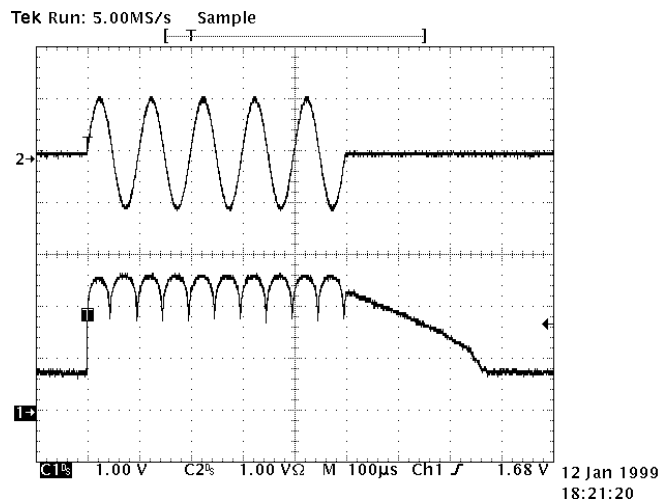
The most widely used convention in RF systems is to specify power in dBm, that is, decibels relative to 1 mW. Specification of log amp input level in terms of power is strictly a concession to *popular* convention; like diode detectors, they do *not* respond to power, but to the input voltage. The use of dBV is more correct. However, since most users specify RF signals in terms of power -- more specifically, dBm with respect to 50  $\Omega$  -- we use both dBV and dBm in specifying the performance of log amps, showing equivalent dBm levels for the special case of a 50- $\Omega$  environment.

### Detecting Fast RF Pulses

Consider now what happens if the input signal is not continuous but pulses on and off. The response time of the log amp's output to a change at the input will be dominated by the RC time constant of the output low-pass filter (see Fig. 9, again.) With the AD8310, a 440-MHz, 95-dB log amp, responding (see Fig. 13) to a 100-MHz burst with a duration of 300 ns the 10% to 90% rise time (a popular measure of log amp response time) is about 15 ns. In practical applications, this allows us to detect and measure RF bursts as short as about 40 ns.



**Fig. 13: Log Amp Pulse Response**



**Figure 14. Log Amp Output Ripple**

Setting the bandwidth of the output low-pass filter (commonly referred to as the Video Bandwidth) very high will result in residual output ripple for input signals whose frequency is close to or below the corner frequency. The response of an AD8313 to a 10-kHz input burst results in excessive output ripple (see Fig. 14) because the corner frequency of the part is internally set to around 13 MHz. This problem can, however, be easily rectified, without penalty, by adding a single-pole low-pass filter at the output.

Video Bandwidth and input signal bandwidth should not be mixed up. Monolithic log amps typically have maximum input signal bandwidths that range from 50 MHz to around 2.5 GHz whereas the video bandwidths of these devices are typically in the 1 to 30 MHz range.

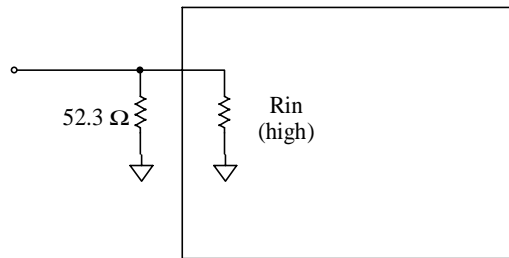
Another interesting effect can be seen (Fig. 14, again); notice that the decay of the log amp's response seems to be quite a bit slower than that of the burst. That's an interesting effect that results from the nature of the log transformation that is taking place.

Remember, however, that at low input levels small changes in the input signal have a significant effect on the output voltage. For example, a change in the input level from 7 mV to 700  $\mu$ V (or about -30 dBm to -50 dBm) has the same effect as a change in input level from 70 mV to 7 mV. Being a logarithmic amplifier, this is what you would expect. However, if we look at the input signal (i.e. the RF burst) with the naked eye, we do not see small changes in the mV range. What's happening (in Fig. 14) is that the burst does not turn off instantly but drops to some level and then decays exponentially to zero. Now if you plot the log of a decaying exponential signal you get a straight line similar to the tail in the plot. In lab. testing of log amp pulse responses providing an input signal which has a near-ideal decay is quite challenging. A common approach is to gate the RF signal with a pulse from a generator in which pulse width can be adjusted with very high resolution<sup>3</sup>.



## Input Matching

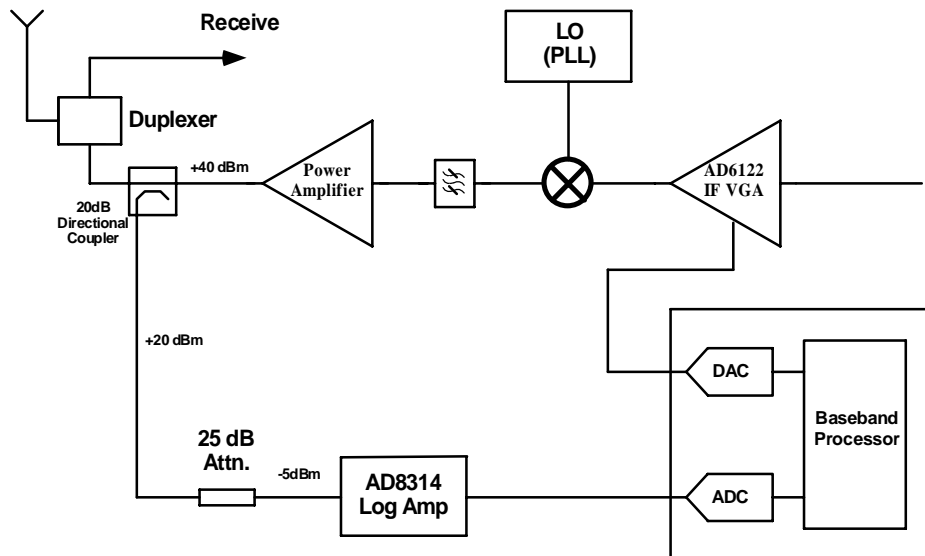
Log amps typically have input impedances ranging from hundreds to thousands of ohms. While reactive-matching techniques can be used to transform the typical  $50\ \Omega$  source impedance to this higher level, a simple resistive shunt generally provides the best overall input match. This is especially true where there is a frequency dependency in the log amp's input impedance. In general, a shunt resistor that is slightly larger than  $50\ \Omega$  is chosen, which combined in parallel with the log amp's higher input impedance gives an overall input impedance of  $50\ \Omega$ .



**Fig. 15: Log Amp Input Matching**

## A Typical RF Power Control Loop with Digital Control

A typical RF power control loop which has digital control (Fig. 16) has RF signal from the PA (with a maximum power of  $+40\ \text{dBm}$ ) passing through a directional coupler on its way to the antenna. Directional couplers are characterized by their coupling factor which is typically in the 10- to 30-dB range, i.e. the output signal is 10 to 30 dB smaller than the primary output. Because the coupled output must deliver some power (in this case to the detector), the coupling process takes some power from the main output. This manifests itself as insertion loss, which is higher for lower coupling factors.



**Fig. 16: Digitally-Controlled RF Transmission System**

In the example shown (Fig.16) the coupled output must be attenuated by a further 25 dB before it is applied to the AD8314 log amp (recall from earlier that the AD8314 is very temperature stable for input levels below about -4 dBm.)

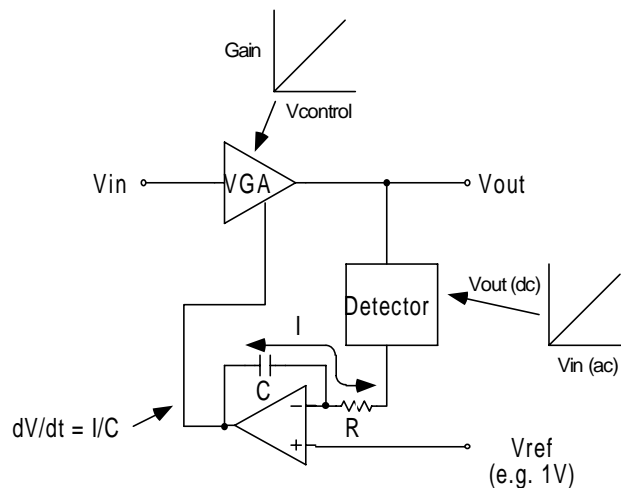
The AD8314's output is digitized in an ADC. For an 8-bit ADC and a detector dynamic range of 40 dB, this results in a resolution of 0.16 dB/code ( $40\text{dB}/2^8$ .) This resolution is more than sufficient for most precision applications.

Once the transmitted power is detected and digitized a DAC is used to adjust the system. In this case the power is adjusted by changing the gain of a variable gain amplifier (VGA) at IF. This is just one way in which power can be changed with other options including bias adjustment of the PA and variation of the amplitude of the baseband signal.

The response time of this loop will be dominated by the digital control circuitry. In general the reaction time of the detector and the VGA will be small in comparison to the conversion rates of the ADC and DAC, and the digital processing time.

### A Typical Analog AGC Loop

Where fast regulation of gain is required the inherent latency of a digitally-controlled AGC loop may not be acceptable. In such situations, an analog AGC loop may be a good alternative.



**Fig. 17: An Analog Automatic Gain Control Loop**

Beginning at the output of the VGA in a generic version (Fig. 17) this signal is fed, usually via a directional coupler, to a detector. The output of the detector drives the input of an op amp, configured as an integrator. A reference voltage drives the non-inverting input of the op amp, and the output of the op amp integrator drives the gain-control input of the VGA. Now, let's examine how this circuit works.

Assume initially that the output of the VGA is at some low level and that the reference voltage on the integrator is at 1 V. The low detector output results in a voltage drop across integrator resistor R. The resulting current through this resistor can only come from the integrator capacitor C. Current flow in this direction increases the output voltage of the integrator. This voltage, which drives the VGA, increases the gain (we are assuming that the VGA's gain control input has a positive sense, i.e. increasing voltage increases gain.) The gain will be increased, therefore increasing the amplifier's output level until the detector output equals 1 V. At that point, the current through the resistor/capacitor will decrease to zero and the integrator output will be held steady, thereby settling the loop. If capacitor charge is lost over time, the gain will begin to decrease. However, this leakage will be quickly corrected by additional integrator current from the newly-reduced detector voltage.

The key usefulness of this circuit lies in its immunity to changes in the VGA gain control function. From a static perspective, at least, the relationship between gain and gain control voltage is of no consequence to the overall transfer function. Depending on the value of  $V_{ref}$  the integrator will set the gain control voltage to whatever level is necessary to produce the desired output level. Any temperature dependency in the gain control function will be eliminated. Also, non-linearities in the gain transfer function of the VGA do not appear in the overall transfer function ( $V_{out}$  vs.  $V_{ref}$ .) The only requirement is that the gain control function of the VGA be monotonic. It is crucial however that *detector* be temperature stable.

The circuit as described so far, has been designed to produce a constant output level for varying input levels. Because this results in a constant output level it becomes clear that the detector does not require a wide dynamic range. We only require it to be temperature stable for input levels that correspond to the setpoint voltage  $V_{ref}$ . For example, the diode detector circuits previously discussed, with poor temperature stability at low levels but reasonable stability at high levels, might be a good choice in applications where the leveled output is quite high.

If, the detector we use has a higher dynamic range, we can now use this circuit to precisely set VGA output levels over a wide dynamic range. To do this the integrator reference voltage,  $V_{ref}$ , is varied. The voltage range on  $V_{ref}$  follows directly from the detector's transfer function. For example, if the detector delivers 0.5 V for an input level of -20 dBV, a reference voltage of 0.5 V will cause the loop to settle when the detector input is -20 dBV (the VGA output will be greater than this amount by whatever coupling factor exists between the VGA and detector.)

The dynamic range for a variable  $V_{out}$  case is determined by the device in the loop with the least dynamic range (i.e. either the gain control range of the VGA or the linear dynamic range of the detector.) Again, note that the VGA does not need a precise gain control function. The dynamic range of the VGA's gain control in this case is defined as the range over which an increasing gain control voltage results in an increasing gain.



The AD603 can deliver a maximum output voltage of 2 V<sub>pk-pk</sub>. To map this maximum level into the maximum input level of the AD8314 an attenuation factor of 0.33 is required (implemented here using a simple resistor divider.) The DAC's full-scale output voltage of 5 V is likewise scaled down to correspond to the AD8314's reference voltage range (0 V to 1.25 V.) This is not absolutely necessary as we could simply use only those DAC codes which corresponds to the log amp's reference voltage range. However, scaling the DAC voltage in this manner, increases the control resolution (scaled in dB/code) by a factor of 4.

As already mentioned, this circuit can be used in two distinct AGC modes. As a leveling circuit, possibly to present a constant input amplitude to an ADC, the setpoint voltage would be held constant. Alternatively, in a transmit applications where the VGA input level would be fairly constant, the setpoint voltage would be adjusted to vary the output signal amplitude by up to 45 dB.

Part III of this series will deal with the response of the log amp to different signal types, and with the use of rms-to-dc converters.

### References

3. Design A Log Amp Pulse Detector, *Microwaves & RF*, January 2000. Reprints available from Analog Devices. pp 3-4
4. AD8361, Output Reference Temperature Drift Compensation, AD8361 Datasheet, pp13-14. Available at [www.analog.com](http://www.analog.com)

### Biography

Eamon Nash is an Applications Engineer at Analog Devices. He has worked at Analog Devices for 10 years, first as a Field Applications Engineer, based in Germany, covering mixed signal and DSP products, then as a Product-Line Applications Engineer at ADI's Advanced Linear Products Group, specializing in building-block components for instrumentation and telecommunications applications. He earned a Bachelor of Engineering degree (BEng) in Electronics from University of Limerick, Ireland. He can be contacted at 781-937-1239 ([eamon.nash@analog.com](mailto:eamon.nash@analog.com))

*Analog Devices, Inc., 804 Woburn Street, Wilmington, MA 01887.*  
<http://www.analog.com>

## 射频和天线设计培训课程推荐

易迪拓培训([www.edatop.com](http://www.edatop.com))由数名来自于研发第一线的资深工程师发起成立,致力并专注于微波、射频、天线设计研发人才的培养;我们于 2006 年整合合并微波 EDA 网([www.mweda.com](http://www.mweda.com)),现已发展成为国内最大的微波射频和天线设计人才培养基地,成功推出多套微波射频以及天线设计经典培训课程和 ADS、HFSS 等专业软件使用培训课程,广受客户好评;并先后与人民邮电出版社、电子工业出版社合作出版了多本专业图书,帮助数万名工程师提升了专业技术能力。客户遍布中兴通讯、研通高频、埃威航电、国人通信等多家国内知名公司,以及台湾工业技术研究院、永业科技、全一电子等多家台湾地区企业。

易迪拓培训课程列表: <http://www.edatop.com/peixun/rfe/129.html>



### 射频工程师养成培训课程套装

该套装精选了射频专业基础培训课程、射频仿真设计培训课程和射频电路测量培训课程三个类别共 30 门视频培训课程和 3 本图书教材;旨在引领学员全面学习一个射频工程师需要熟悉、理解和掌握的专业知识和研发设计能力。通过套装的学习,能够让学员完全达到和胜任一个合格的射频工程师的要求...

课程网址: <http://www.edatop.com/peixun/rfe/110.html>

### ADS 学习培训课程套装

该套装是迄今国内最全面、最权威的 ADS 培训教程,共包含 10 门 ADS 学习培训课程。课程是由具有多年 ADS 使用经验的微波射频与通信系统设计领域资深专家讲解,并多结合设计实例,由浅入深、详细而又全面地讲解了 ADS 在微波射频电路设计、通信系统设计和电磁仿真设计方面的内容。能让您在最短的时间内学会使用 ADS,迅速提升个人技术能力,把 ADS 真正应用到实际研发工作中去,成为 ADS 设计专家...



课程网址: <http://www.edatop.com/peixun/ads/13.html>



### HFSS 学习培训课程套装

该套课程套装包含了本站全部 HFSS 培训课程,是迄今国内最全面、最专业的 HFSS 培训教程套装,可以帮助您从零开始,全面深入学习 HFSS 的各项功能和在多个方面的工程应用。购买套装,更可超值赠送 3 个月免费学习答疑,随时解答您学习过程中遇到的棘手问题,让您的 HFSS 学习更加轻松顺畅...

课程网址: <http://www.edatop.com/peixun/hfss/11.html>

## CST 学习培训课程套装

该培训套装由易迪拓培训联合微波 EDA 网共同推出,是最全面、系统、专业的 CST 微波工作室培训课程套装,所有课程都由经验丰富的专家授课,视频教学,可以帮助您从零开始,全面系统地学习 CST 微波工作的各项功能及其在微波射频、天线设计等领域的设计应用。且购买该套装,还可超值赠送 3 个月免费学习答疑...

课程网址: <http://www.edatop.com/peixun/cst/24.html>



## HFSS 天线设计培训课程套装

套装包含 6 门视频课程和 1 本图书,课程从基础讲起,内容由浅入深,理论介绍和实际操作讲解相结合,全面系统的讲解了 HFSS 天线设计的全过程。是国内最全面、最专业的 HFSS 天线设计课程,可以帮助您快速学习掌握如何使用 HFSS 设计天线,让天线设计不再难...

课程网址: <http://www.edatop.com/peixun/hfss/122.html>

## 13.56MHz NFC/RFID 线圈天线设计培训课程套装

套装包含 4 门视频培训课程,培训将 13.56MHz 线圈天线设计原理和仿真设计实践相结合,全面系统地讲解了 13.56MHz 线圈天线的工作原理、设计方法、设计考量以及使用 HFSS 和 CST 仿真分析线圈天线的具体操作,同时还介绍了 13.56MHz 线圈天线匹配电路的设计和调试。通过该套课程的学习,可以帮助您快速学习掌握 13.56MHz 线圈天线及其匹配电路的原理、设计和调试...

详情浏览: <http://www.edatop.com/peixun/antenna/116.html>



### 我们的课程优势:

- ※ 成立于 2004 年,10 多年丰富的行业经验,
- ※ 一直致力并专注于微波射频和天线设计工程师的培养,更了解该行业对人才的要求
- ※ 经验丰富的一线资深工程师讲授,结合实际工程案例,直观、实用、易学

### 联系我们:

- ※ 易迪拓培训官网: <http://www.edatop.com>
- ※ 微波 EDA 网: <http://www.mweda.com>
- ※ 官方淘宝店: <http://shop36920890.taobao.com>